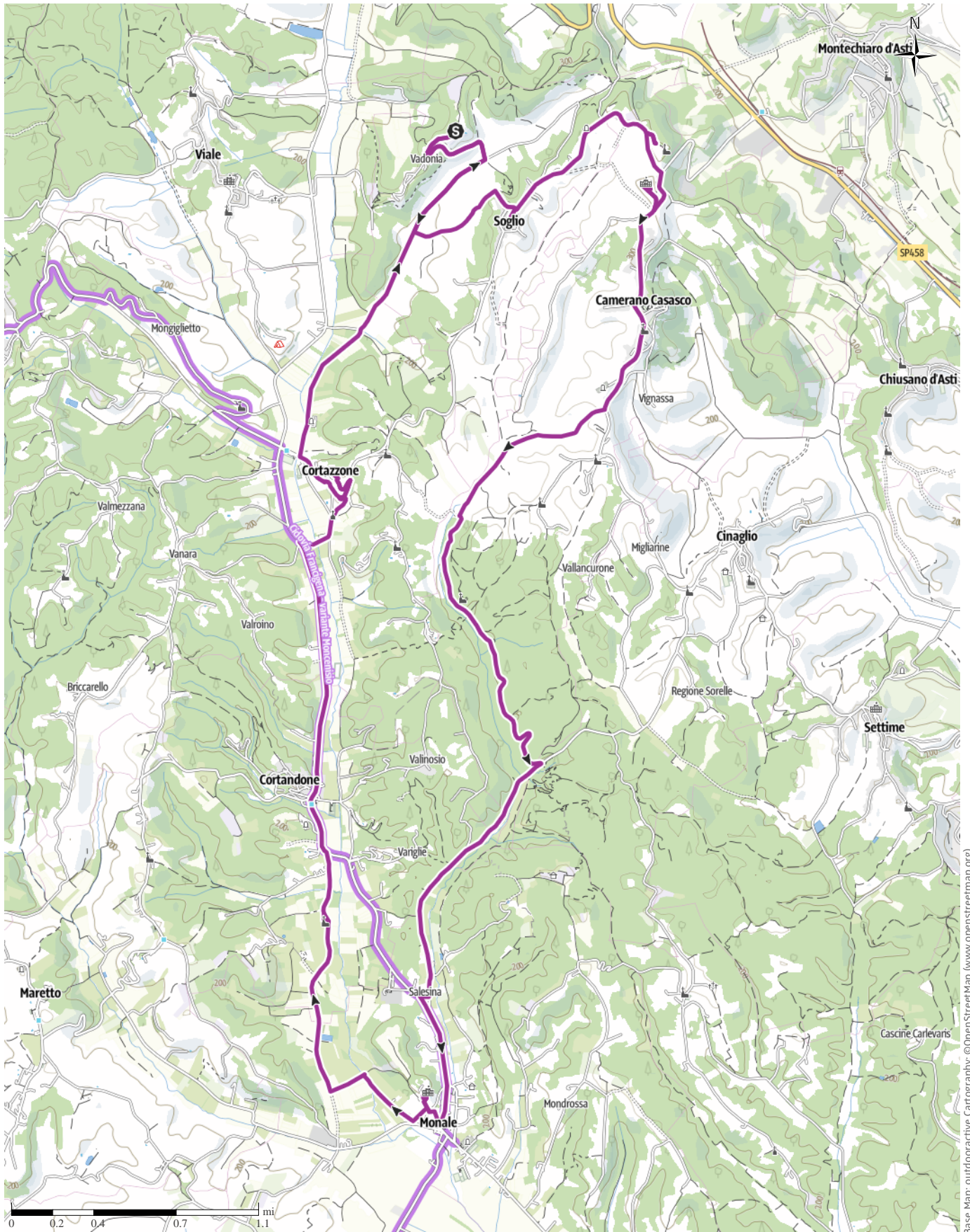


Itinerary 2

↔ 15.9 mi | ⌚ 2:15 h | ⬇️ 1276ft | ⬆️ 1276ft | Difficulty moderate



Base Map: outdooractive Cartography. ©OpenStreetMap (www.openstreetmap.org)

Itinerary 2

↔ 15.9 mi

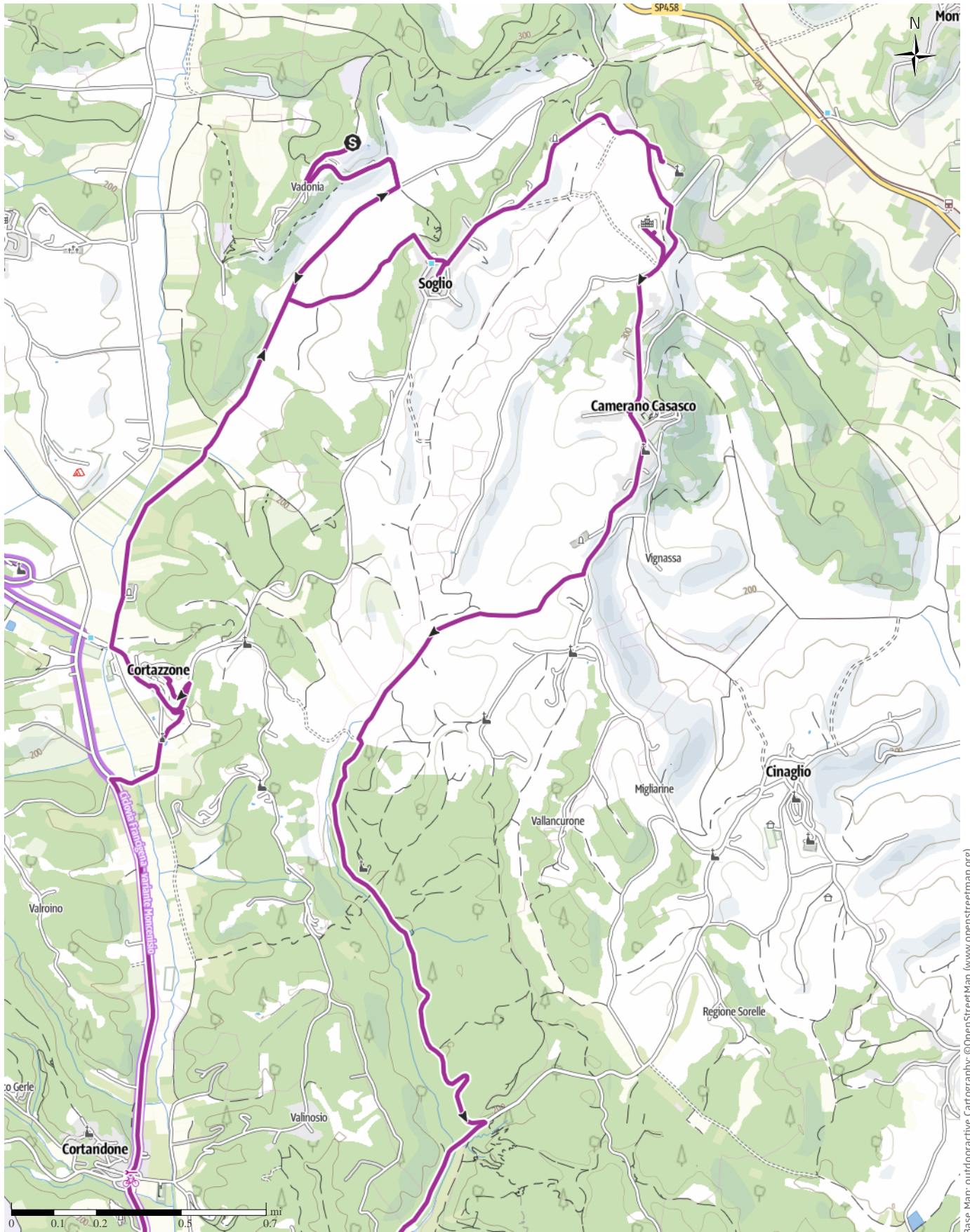
🕒 2:15 h

▲ 1276ft

▼ 1276ft

Difficulty

moderate



Base Map: outdooractive Cartography. ©OpenStreetMap (www.openstreetmap.org)

Itinerary 2

↔ 15.9 mi

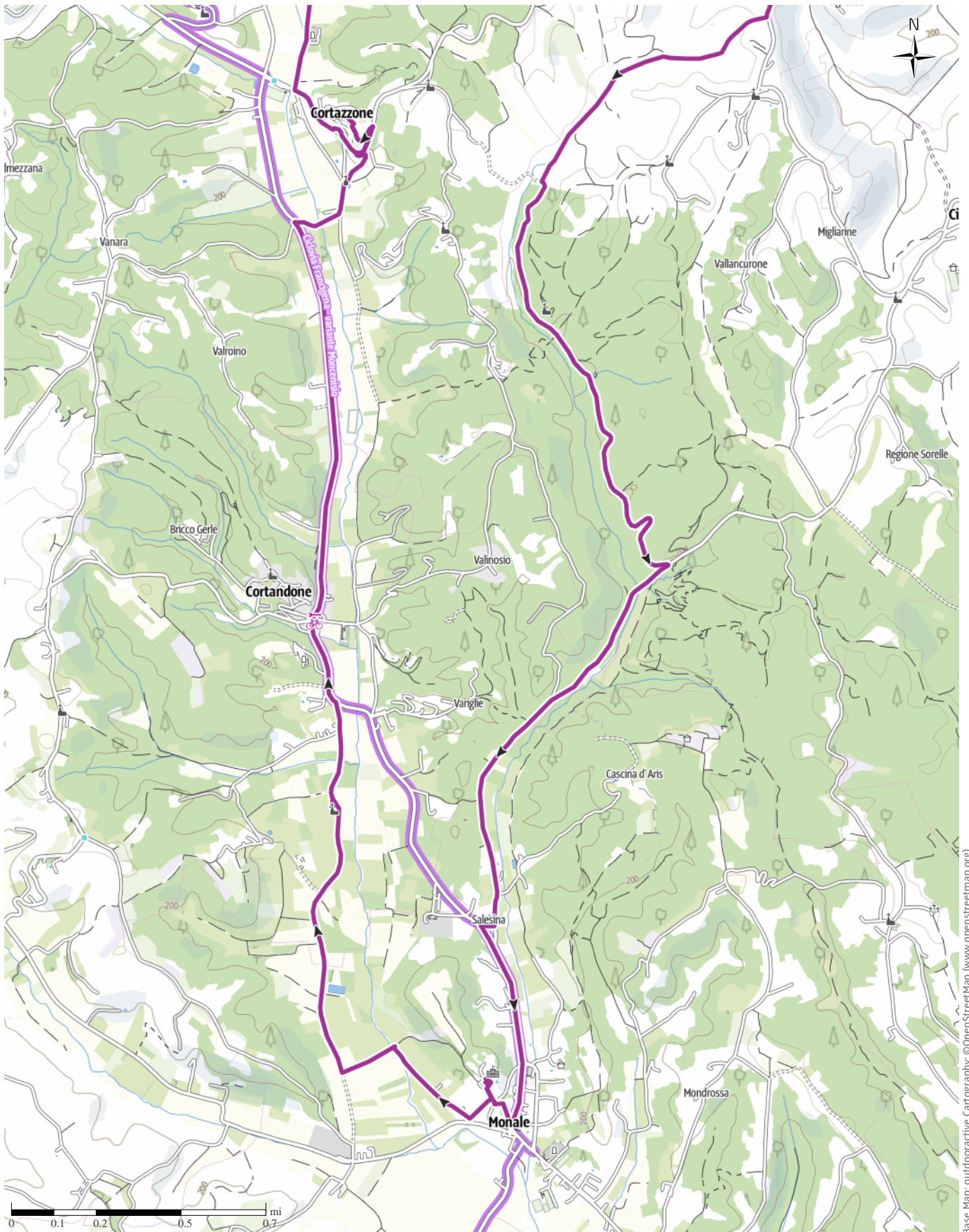
🕒 2:15 h

▲ 1276ft

▼ 1276ft

Difficulty

moderate



Base Map: outdooractive Cartography. ©OpenStreetMap (www.openstreetmap.org)

Itinerary 2

↔ 15.9 mi

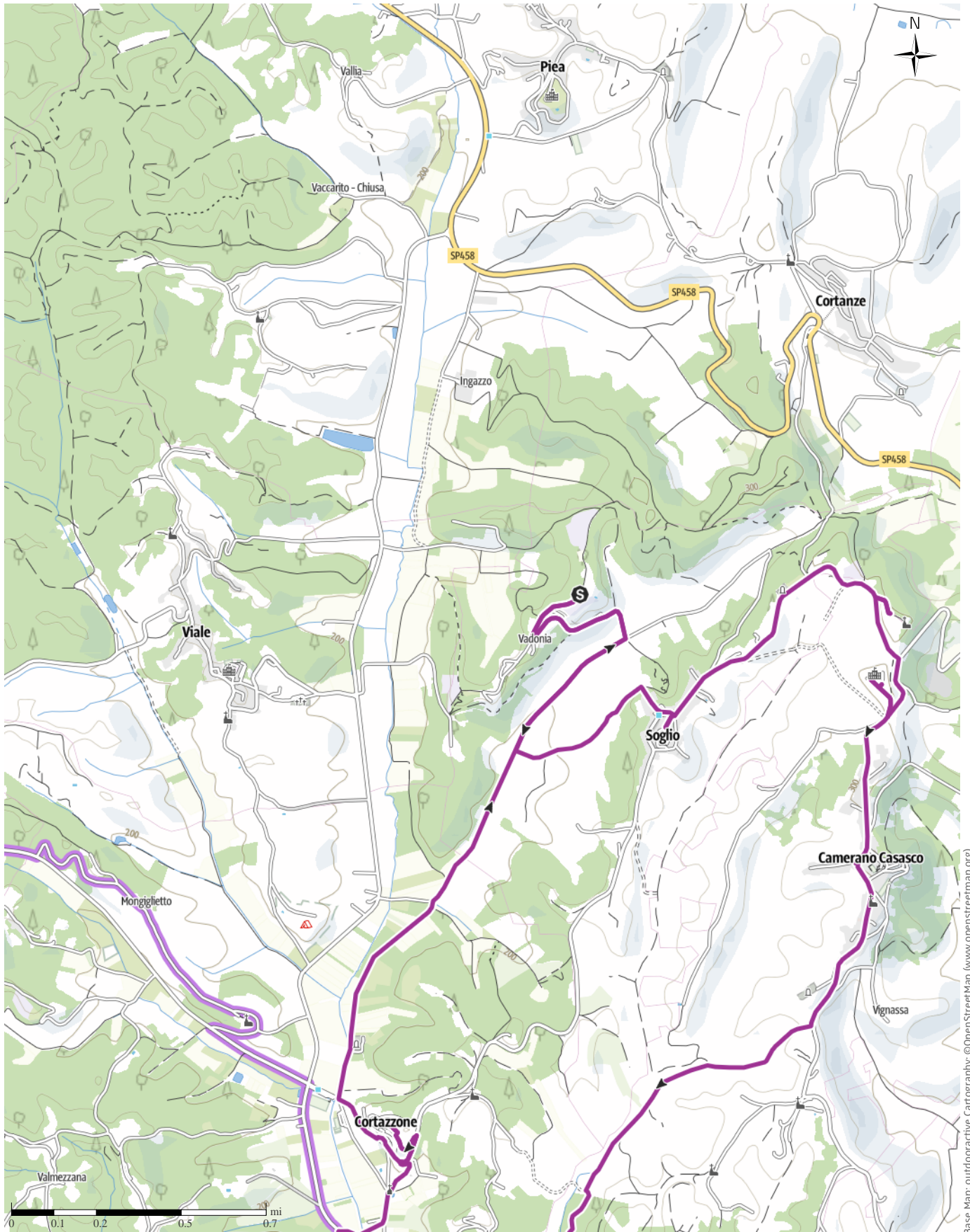
🕒 2:15 h

▲ 1276ft

▼ 1276ft

Difficulty

moderate



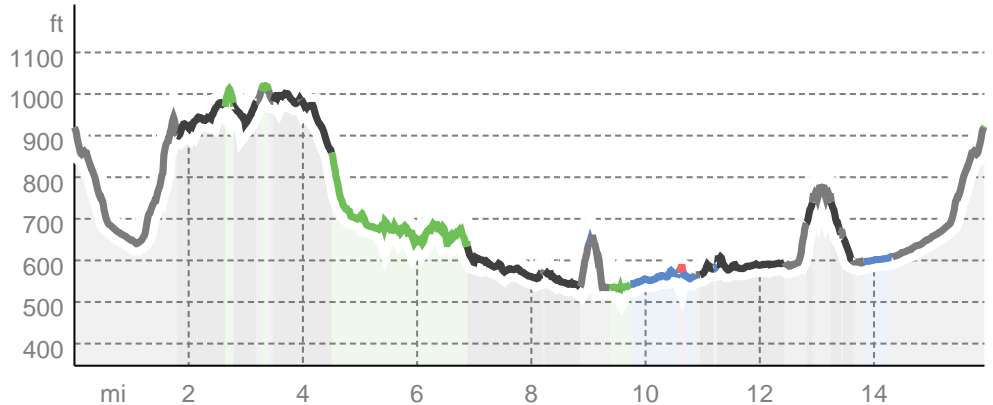
Base Map: outdooractive Cartography. ©OpenStreetMap (www.openstreetmap.org)

Itinerary 2

Track types

Asphalt	5.2 mi
Dirt road	1.7 mi
Forested/wild trail	3 mi
Path	0.1 mi
Road	6 mi

Elevation profile



route data

Bike Riding

Distance	↔	15.9 mi
Duration	🕒	2:15 h
Ascent	⬆️	1276 ft
Descent	⬇️	1276 ft

Difficulty: moderate

Stamina: ●●●●●●

Technique: ●●●●●●

Altitude: 1017 ft / 528 ft

Best time of year

- JAN | FEB | MAR
- APR | MAY | JUN
- JUL | AUG | SEP
- OCT | NOV | DEC

Ratings

Authors

Experience: ●●●●●●

Landscape: ●●●●●●

Community

More route data

Awards



Aleop Tur

Update: May 15, 2026

familiar crest to Bric del Vento. Expect more raw gravel and trail riding than Route 1, and two solid climbs.

Takeaway route for iPhone and Android



Scan QR code, save this route offline, share with friends and more...

Website

<https://out.ac/1hBK34>

This longer loop pushes deeper into the wildest corner of the area, crossing from the open vineyard ridges into the enclosed forest of the Riserva Naturale Gorghesi — a protected woodland tucked in the valley between Camerano Casasco and Monale. The route passes through Camerano Casasco (the other home village of this rental) before threading the forest, climbing out to Monale, then looping through Cortadone and Cortanze and returning over the